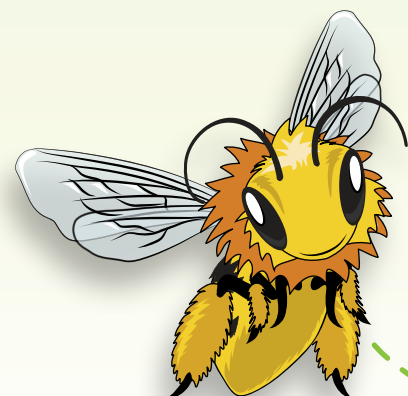




# Join me on an environmental scavenger hunt at H-E-B!



Welcome, kids! My name is H-E-Bee. I am a squash bee, native to Texas. I'm here to teach you about all the amazing things my friends at H-E-B and I are doing to care for and protect our environment. Follow me to the first stop!

## 1 Start at the plastic bag and film recycling bin located near the store entrance!

Did you know that plastic bags can't be recycled at home but can be recycled at H-E-B? All H-E-B stores have a plastic bag and film recycling bin like this one!

We collect plastic film from everyday items like produce and bread bags, newspaper sleeves, and dry-cleaning bags.

**Recycling** turns used materials, like plastic bags and film, into new products, which helps to reduce the amount of trash we create.

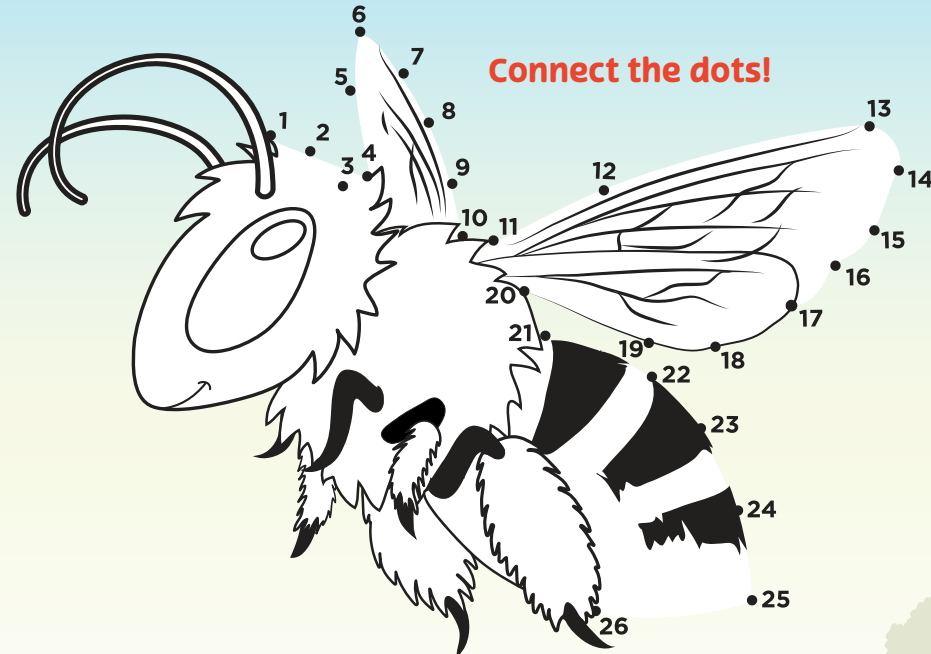
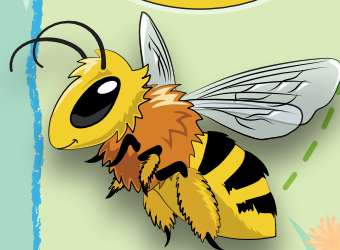
**We can help reduce plastic use from the beginning.** Try shopping with your own reusable bags from home. If you didn't today, that's OK! Be sure to bring your plastic bags and plastic film/wrap back to H-E-B on your next visit!

Plastic pollution is harmful to sea turtles, which can ingest or become entangled in plastic waste. Proper recycling of plastic bags helps prevent plastic waste from entering waterways. Learn more about sea turtle conservation by using a phone to scan this QR code:



Remember to ask an adult for help to scan the QR codes!

50 million pounds of plastic bags have been recycled at H-E-B since 2004!



Connect the dots!

## 2 Follow me! Our next stop is the produce section. Head over to the apples!

H-E-B offers both organic and conventionally grown fruits and vegetables.

**Organic** produce is grown using farming practices that support clean water, soil, and air. That's why we make sure to support organic food growers.

H-E-B also provides **locally sourced** produce, or produce grown nearby, from over 27 Texan suppliers. This helps reduce the amount of fuel used to transport our fruits and vegetables!

H-E-B has over 75 organic produce items for Texans to enjoy!



## Look at all the fruits and vegetables available in the produce section!

Do you notice any H-E-B Texas Roots™ produce? Those fruits and vegetables are sourced right here in Texas!



Many foods grow in Texas in the spring, including red foods (such as strawberries and radishes) and vegetables with hard exteriors (such as sweet potatoes and beets). Since they can be sourced locally and are abundant at this time of year, they require less travel time and fuel!

What is your favorite fruit or vegetable?

Scan this QR code to find three delicious recipes you can make with your family using fresh H-E-B produce:



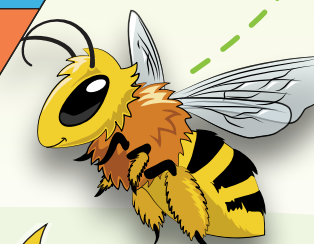
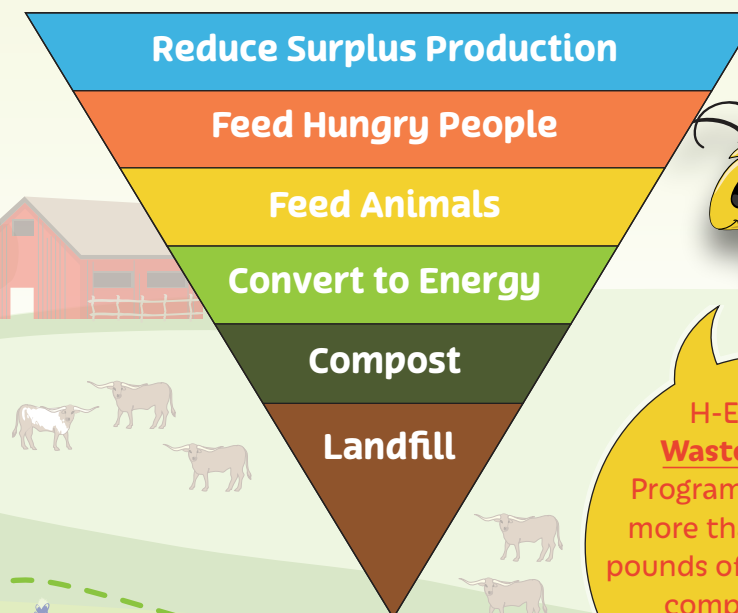
3

## Now, we will stay in the produce section and look for the avocados!

It's important that we feed as many people and animals as possible. That is why H-E-B follows the guidance of the Environmental Protection Agency's Food Recovery Hierarchy to reduce food waste.



## Food Recovery Hierarchy



H-E-B's Food Waste Diversion Program has diverted more than 626 million pounds of food waste by composting it or turning it into animal feed.

First, we donate surplus food to food banks to feed Texas families. Then, food waste, like avocado skins and orange rinds, is **composted** or used to give cows tasty, nutritious meals. In other words, we divert food waste from landfills so that it has a greater purpose.

## Let's learn a little more about reducing food waste!

Pick up an avocado and hold it in your hand. Very gently squeeze it. Is it hard or soft?

When avocados are soft, that means they are ripe and ready to be eaten. Soft avocados are perfect for making guacamole! And when avocados get brown, they are great for adding to a smoothie with strawberries, bananas, and either milk or orange juice.

You can also try growing your own avocado tree from a seed! Learn how to do this with the help of an adult by scanning this QR code:





4

Let's head to one of my favorite sections! Find the floral department, which is where all the fresh flowers are.

H-E-B reuses many items, including these flower containers you see here. We also reuse cardboard boxes, plastic crates, and wooden pallets.

**Reusing** is important: It helps to reduce waste by extending the life of an item that would otherwise be single-use (used just one time).

This diagram shows us the order of actions, from top to bottom, that best support our environment.



H-E-B's recycling efforts have saved the equivalent of 11 million trees!

Walk around the flower section and notice all the different shapes, sizes, textures, and colors of the flowers.

Native bee species, like me and my dear friends the bumblebees, are among some of the most important pollinators for our plants here in Texas! Pollination is necessary for fruits and vegetables to grow. In addition to bees, other pollinators that help with this process are butterflies, moths, bats, and beetles.

Participate in reusing at home! Take an empty glass jar you are not using anymore, like an old salsa or pickle jar. Clean it and reuse it to store this delicious jam:



5

We're almost done! Let's go to the dairy section. Locate the milk, cheese, and yogurt.

Have you ever wondered what can be recycled? Most products that we buy come with packaging materials, many of which are recyclable.

The How2Recycle label is designed to tell us which parts of a product's packaging are recyclable and which are not. Though small, it tells us a great amount of information!

How to PREPARE the packaging for recycling

HOW to recycle the packaging if recyclable



The TYPE of recyclable material it is made of

The PART of the packaging to recycle

Many things actually can be recycled and don't need to go into the trash!

H-E-B has over 1,700 products with this recycling label and more to come.

Let's try this out together! Go to the dairy section. Find one of these products below:

- H-E-B Dairy-Free Coconut-Based Yogurt, Strawberry
- H-E-B MooTopia® 2% Chocolate Milk

Now, let's identify the four parts. Hint: Read the label from top to bottom and refer to the four parts above!

Learn more about the How2Recycle labels here:



6

It's time for our last stop. Head over to the aisle with the Field & Future by H-E-B™ trash bags.



**Field & Future** is our new line of products that do not use over 165 harsh chemicals and are eco-friendly.\* These trash bags are eco-friendly because they are made with some recycled plastic wrap collected from our H-E-B warehouses!

When a used product is recycled rather than thrown away, it becomes part of a **circular economy** or a system that helps to reduce waste.

Pick up a box of Field & Future trash bags. Look on the side for four green circles that help explain how this product contributes to a circular economy.

Now look for the How2Recycle label. Can this packaging be recycled, too?

Learn more about how Field & Future products are conserving and protecting Texas here:



Field & Future trash bags are made with up to 65% recycled plastic.



X M L O M O Z J E M I D S C T  
Z H S R Y R E C Y C L I N G C  
C Z T G W W E O H O R Z G U  
E N Z A R L V R U O M E C A L  
V L H N U K J F P U K U S P W  
B V L I M I X X I M I S Q C L  
C J M C C O M P O S T E D E O  
N W A S T E D I V E R S I O N  
A E T G E N U O T I N S A N P  
S G S F I E L D & F U T U R E  
L O C A L L Y S O U R C E D H  
P D M Z P T H U W M N U W L G  
I T X P P L A D M O F I B U Q  
C I R C U L A R E C O N O M Y

Word Search

- Recycling
- Organic
- Locally sourced
- Waste diversion
- Composted
- Reuses
- Field & Future
- Circular economy

Congratulations! You have completed the scavenger hunt. That was so fun and informative! We hope you enjoyed learning how H-E-B is protecting Our Texas, Our Future. You can head to [OurTexasOurFuture.com](https://www.ourtexasourfuture.com) to learn even more. Thank you for joining us!



\*Made with recycled or recyclable content, biodegradable formulas, or plant-based ingredients & without over 165 harsh chemicals