

# MEDICARE PART D CUSTOMERS: BIG NEWS!



## 2 GREAT PART D PRESCRIPTION DRUG PLANS FROM SYMPHONIX HEALTH — WITH EXTRA SAVINGS AT H-E-B PHARMACIES\*

### ENROLLING IS EASY!

For more information  
just call or click.

Visit:

[www.symphonixhealth.com](http://www.symphonixhealth.com)

Or, Medicare beneficiaries may enroll in Symphonix Health Insurance through the CMS Medicare Online Enrollment Center at

<http://www.medicare.gov>

Find out how much you could save on your prescription drugs. Call now:

**800-236-6927**  
(TTY/TDD 711)

8 a.m. to 8 p.m., seven days  
a week through February 14

**SYMPHONIX VALUE RX  
PRESCRIPTION DRUG PLAN (PDP)**

### \$1 COPAYS

**FOR PREFERRED GENERIC DRUGS  
AT H-E-B PHARMACIES\***

**SYMPHONIX PREMIER RX  
PRESCRIPTION DRUG PLAN (PDP)**

### \$0 DEDUCTIBLE

**PLUS \$2 COPAYS FOR PREFERRED  
GENERIC DRUGS AND BIG SAVINGS ON  
MONTHLY PREMIUMS COMPARED  
TO SIMILAR ENHANCED PLANS**

*READ ON FOR MORE DETAILS*





# REAL VALUE — REAL SAVINGS

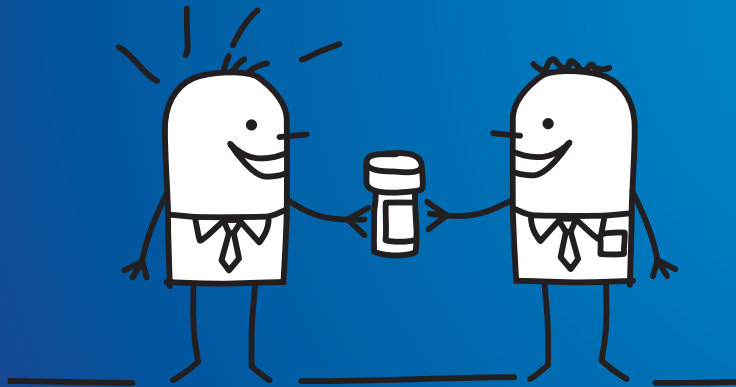
## CHOOSE THE PLAN THAT'S RIGHT FOR YOU



### SYMPHONIX VALUE Rx (PDP)

The convenience of H-E-B pharmacy — plus big savings on preferred generic drugs:

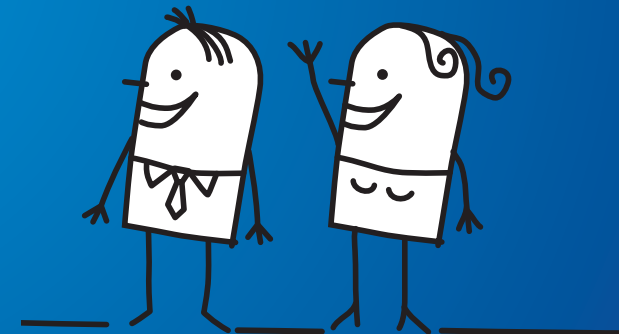
- **Low monthly plan premium**
- **Copays can be as low as \$1** for preferred generic drugs at H-E-B pharmacies\*
- **Comprehensive formulary** that includes the most commonly used drugs
- **More than 2,200 generic prescription drugs** to save you money



### SYMPHONIX PREMIER Rx (PDP)

Extra value for people who take multiple brand name and generic drugs:

- **\$0 ANNUAL DEDUCTIBLE**
- **Big savings on monthly premiums** compared to similar enhanced plans
- **\$2 copays** for preferred generic drugs at H-E-B pharmacies\*
- **Broad formulary** featuring a unique blend of the most prescribed brand name and generic drugs
- **Donut hole coverage** for all Tier 1 & 2 drugs



\*Other preferred and non-preferred pharmacies are available in our network. Copays may be higher at other pharmacies.

**ENROLL TODAY!**  
**Medicare Annual Enrollment**  
**Period ends December 7.**

**Call: 1-800-236-6927 (TTY/TDD 711),**  
**8 a.m. to 8 p.m., seven days a week through February 14**  
**OR Click: [www.SymphonixHealth.com](http://www.SymphonixHealth.com)**

*Symphonix Health Insurance is a Part D Plan with a Medicare contract. Enrollment in Symphonix plans depends on Contract renewal. The benefit information provided here is a brief summary and not a comprehensive description of the plans. Limitations, copayments, and restrictions may apply. Benefits, formulary, pharmacy network, premium and/or copayments/coinsurance for either plan may change on January 1 of 2016. You must continue to pay your Part B Premiums. This material is for informational purposes only and not a substitute for your own research concerning your healthcare. Not available in CT, FL, MA, NY, PA, RI, VT and WV. This is an advertisement.*